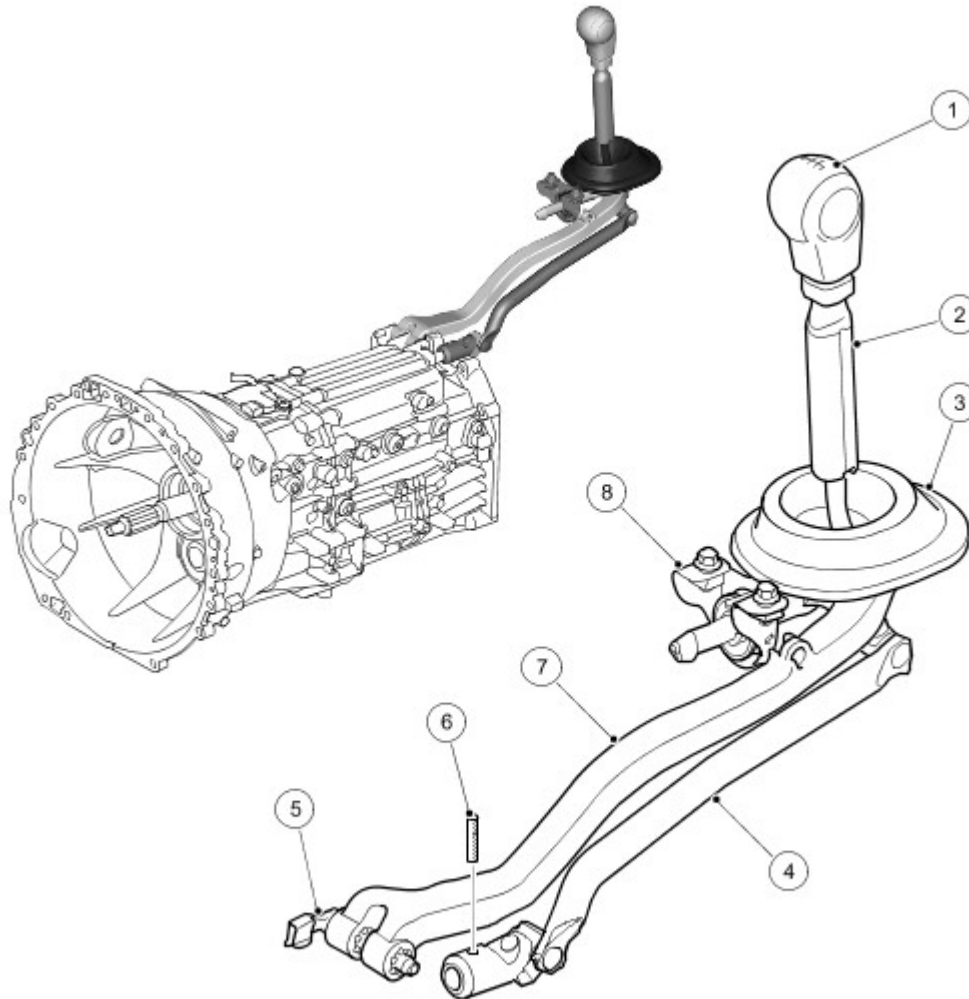




External Controls

Gear Change Mechanism

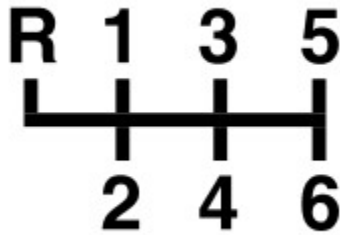


E47713

Item	Part Number	Description
1	-	Gear knob
2	-	Gear lever
3	-	Gaiter
4	-	Shift rod
5	-	Clevis pin
6	-	Roll pin
7	-	Steady rod
8	-	Floater bracket

The gear change assembly is bolted to the transmission tunnel via a floater bracket. A pin and retainer connects the shift rod to the transmissions selector shaft. A steady rod is fitted between the gear change mechanism and the rear of the transmission casing. The rod is held in place by means of a clevis pin for added strength and rigidity.

The gear lever incorporates a vibration attenuator to reduce any Noise Vibration and Harshness (NVH) generated by the powertrain components.



E47714

Bias springs within the transmission provide a positive return of the gear lever to the neutral position with selection of 1st/2nd, 5th/6th and reverse gears being against bias spring pressure. Spring-loaded detents on the selector rod and x-gate butterfly within the transmission, provide positive gear and neutral selection.